



# BIOLOGICAL AIR CLEANING SYSTEMS

**FOR A FARM IN  
HARMONY WITH  
THE SURROUNDINGS**

- ✓ Ammonia
- ✓ Odour
- ✓ Dust

# LICENSE TO PRODUCE

## FARM IN HARMONY WITH SURROUNDINGS



### LOCAL ACCEPTANCE

Just like other industries, animal husbandry must take into account the surroundings and the environment. Cleaning of animal house air is an essential part of this. Dust and odor removal provides the company acceptance by the local community.



### KEEP PRODUCING

This makes it possible to situate farms near villages and cities. Farms that are surrounded by urban expansion can also continue to produce at the same location without coming into conflict with their new neighbors.



### EASIEST WAY

A biological process is the easiest way to remove both odor and dust as well as ammonia from farm air.

### SINCE 1994

Dorset Farm Systems was already building the first biological air cleaners on a pig farm in 1994

Since then, Dorset has proved to be a reliable partner in the agricultural sector and beyond.

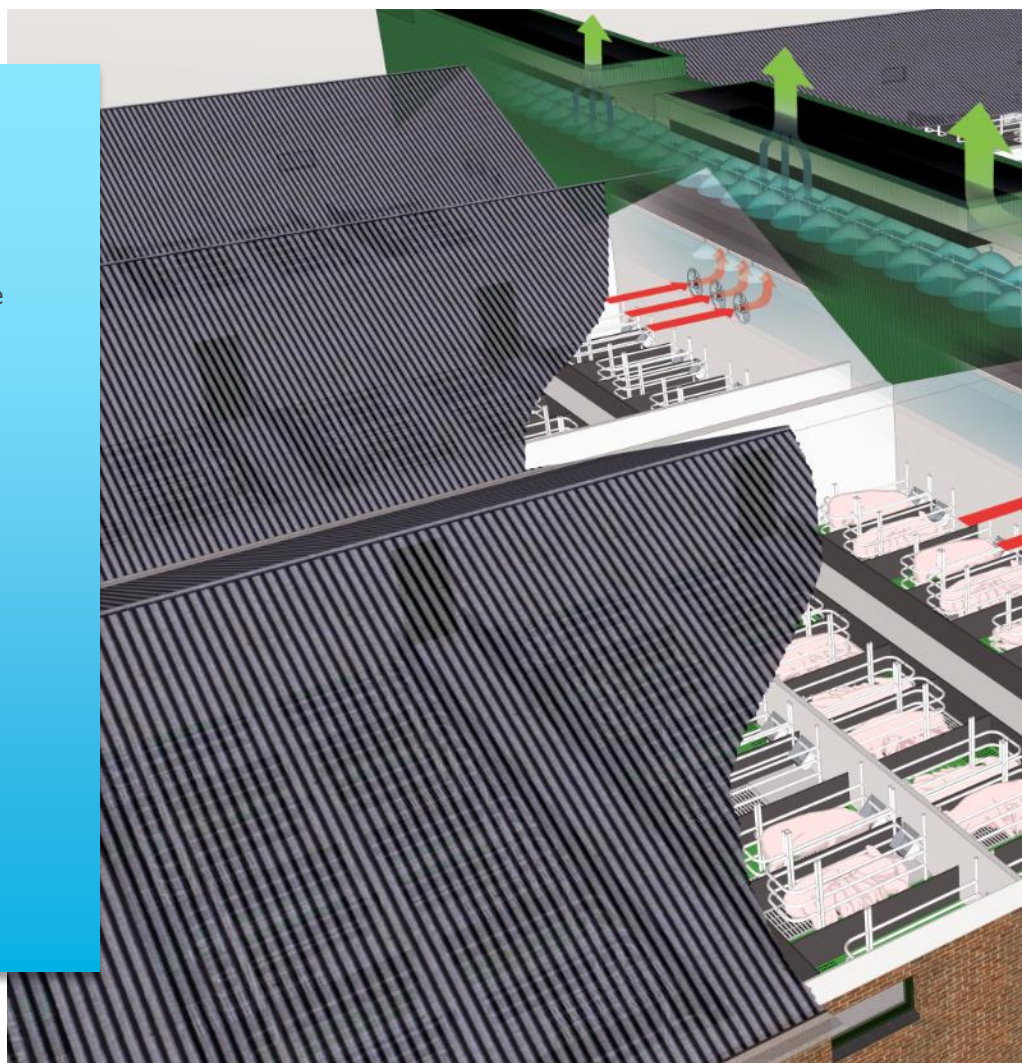
### THOUGHTFUL DETAILS

Long-lasting experience is reflected in many thoughtful details. A

Dorset air cleaner becomes essential to the company without being an extra burden for business operations.

### CERTIFIED

The air cleaners are certified / recognized in many countries including the Netherlands, Belgium, Denmark, Switzerland and Germany.



# PRINCIPLE

## DISSOLVE IN WATER

The basis is always the direct contact between farm air and washing water in the filter package.

Dust, odor components and ammonia dissolve in the water. It then becomes food for the bacteria that grow on the filter surface.

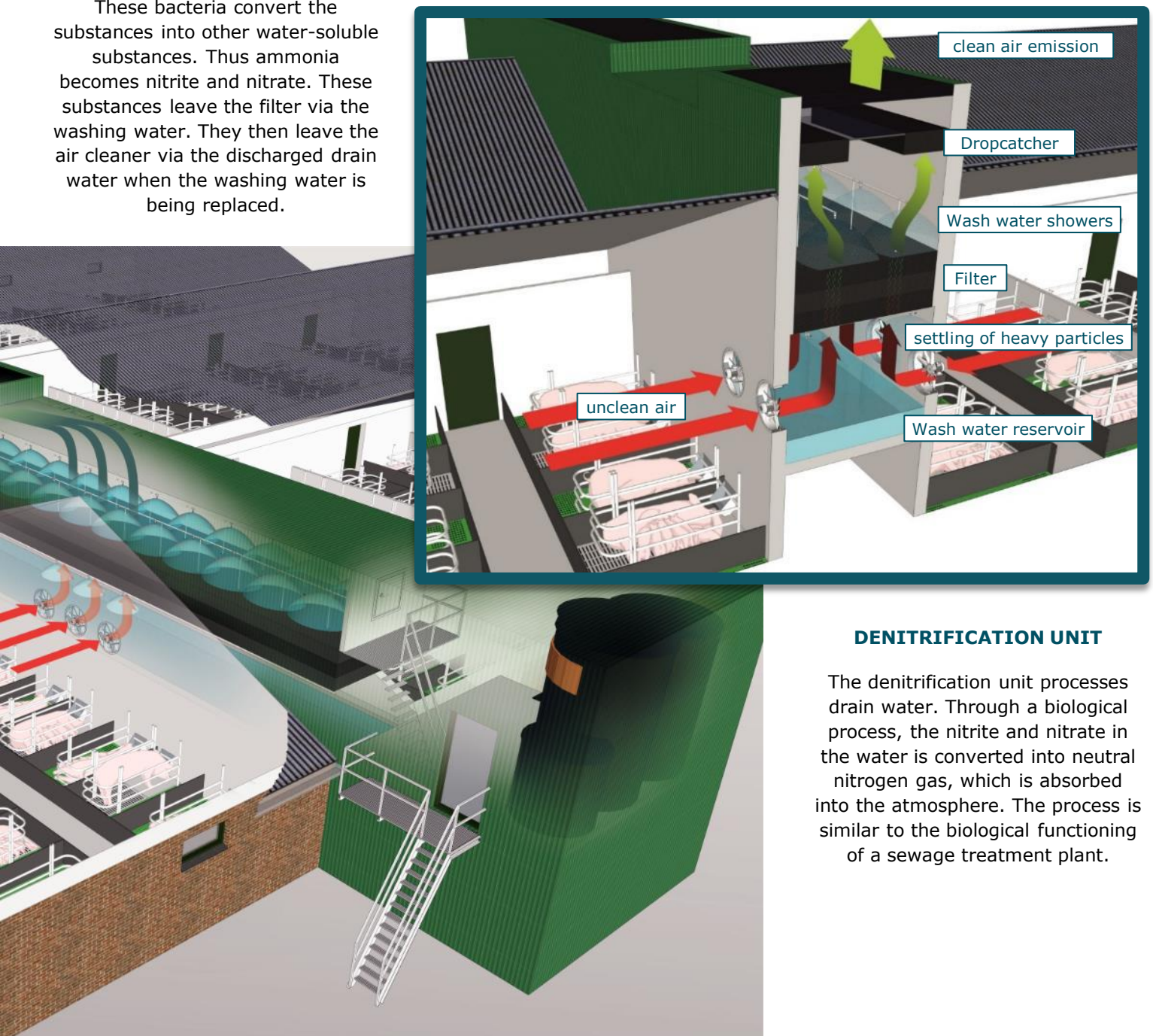
These bacteria convert the substances into other water-soluble substances. Thus ammonia becomes nitrite and nitrate. These substances leave the filter via the washing water. They then leave the air cleaner via the discharged drain water when the washing water is being replaced.

## SELF-CLEANING FILTER

The filter consists of a honeycomb-like plastic package. The filter package is designed to make it self-cleaning and therefore normally no manually cleaning will be required.

## SATURATED WASHING WATER

Because the washing water becomes saturated with nitrate and nitrite, the water needs to be refreshed. The discharged drain water can be used for irrigation or processed in a denitrification unit. The washing water is poisonous.



## DENITRIFICATION UNIT

The denitrification unit processes drain water. Through a biological process, the nitrite and nitrate in the water is converted into neutral nitrogen gas, which is absorbed into the atmosphere. The process is similar to the biological functioning of a sewage treatment plant.



# PRACTISE

## LOW VARIABLE COSTS

A biological washer requires a significant investment, but the variable costs are then extremely low.

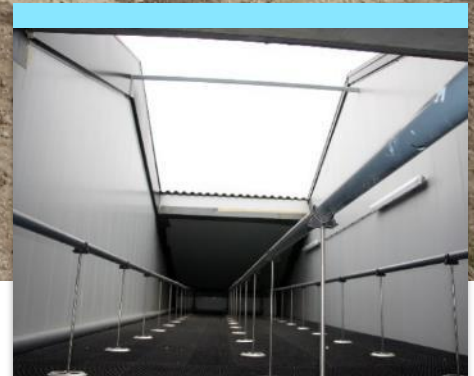
The air resistance is very low, therefore the fans hardly have to supply more pressure and thus use hardly more power than before.

Maintenance requirements are limited to inspection of the nozzles and of the values on the control panel. The filter is designed to be self-cleaning and normally will not require any manual cleaning.



## MEASUREMENTS

Typical dimensions for an air cleaner for 100,000 m<sup>3</sup>/h barn air: package height 90 cm and 50 m<sup>2</sup> filter surface



## LEVERINGSMOGELIJKHEDEN

The air washer can be supplied as a ready-to-use unit and as an assembly kit.

Larger scrubbers can be built-in on location as an integrated part of the barn.



# POULTRY FARM

## DUST WASHER FOR THE POULTRY FARM

### BIO WASHER POULTRY



Switzerland

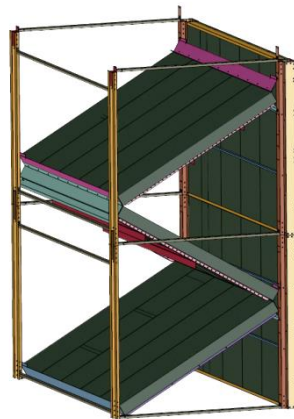


The Netherlands

### DUST WASHER

Dealing with dust is a problem when washing air from the poultry farm.

The dust washer by Dorset can be used independently to reduce dust emissions. Or it is combined with a bio washer to reduce ammonia and odor emissions as well.



### DUST WATER TREATMENT

Dorset has been able to develop a dust water treatment, based on its expertise with waste streamas, which separates the dust from the water as a solid fraction.

This fraction is suitable to be added to the manure. The water is reused in the washer.



The only dust washer with reuse of dust water!

# HEAT RECOVERY

## LOWER ENERGY CONSUMPTION WITH SMART TECHNOLOGY

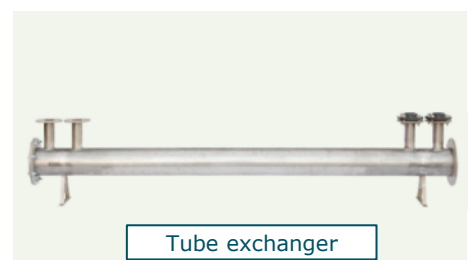
Dorset has several techniques available around the air scrubber:

- Air heat exchanger
- Tube changer
- Heat pump

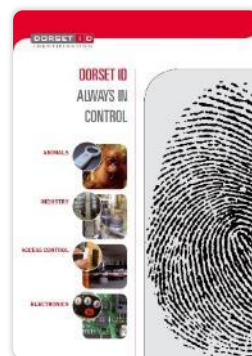
Ask about the possibilities!



Heat exchanger



Tube exchanger



MORE INFO AT  
**[WWW.DORSET.NU](http://WWW.DORSET.NU)**

**Dorset Green Machines B.V.**  
Weverij 26  
7122 MS AALTEN  
The Netherlands  
Tel. +31 (0) 543 47 21 03  
Fax. +31 (0) 543 47 53 55  
E-mail [gm@dorset.nu](mailto:gm@dorset.nu)



INNOVATION  
PRODUCTION  
INSTALLATION